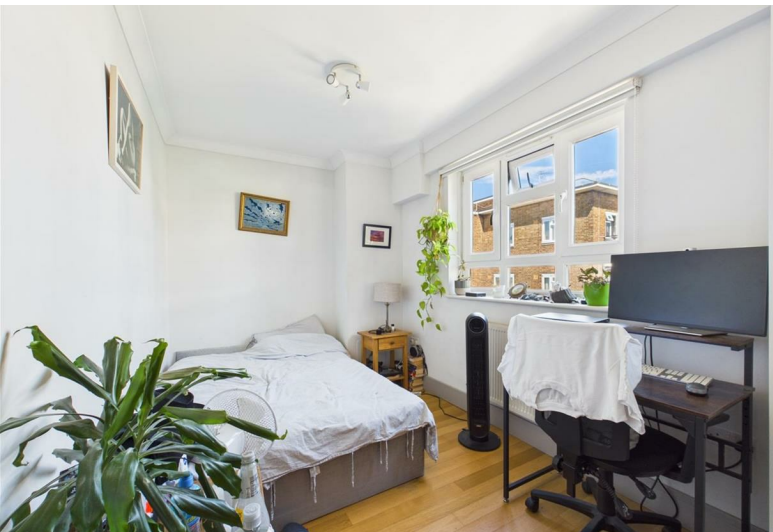


Deepdene Gardens | London, SW2



£2,800 Per Month

- 3 double bedrooms • 2 W/C's • 2 Shower rooms • 10 mins from Brixton Hill parade • Great natural Light • 630 sq ft

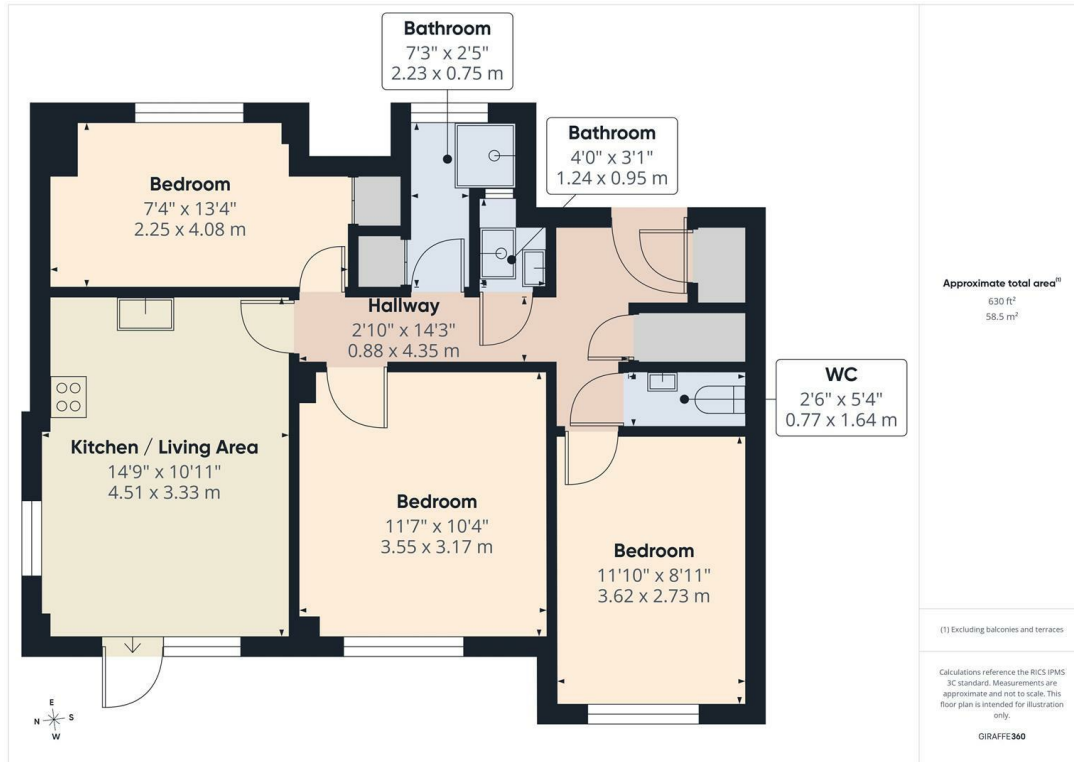
Deepdene Gardens | London, SW2



Spacious 3 bed flat Comprises open plan living room with modern kitchen, 3 double bedrooms, all good sizes, two W/C's and two shower rooms and a balcony.

Situated on the 5th floor of a well maintained Lambeth building it has masses of natural light, double glazed windows and gas central heating. The property is located 10 minutes away from Brixton Hill parade with its fantastic selection of bars & eateries (such as The Fish Lounge, Curry Paradise, the White Horse Pub, Pizza Brixton, Stir Coffee & Cafe on the Hill). Brixton town centre, which is home to Brixton Village, Ritz Cinema, Brixton Academy and Pop Brixton as well as many more bars and shops is within 15-20 minutes' walk or few bus stops away. Transport links include Brixton tube station, mainline station and numerous buses to the City and West End. Perfect for 3 professional sharers or a family and available as part furnished.

Lambeth Tax - Band B
EPC - C



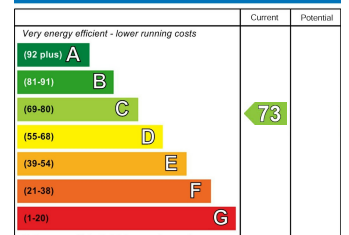
Approximate total area[®]
630 ft²
58.5 m²

(1) Excluding balconies and terraces

Calculations reference the RICS IPMS 3C standard. Measurements are approximate and not to scale. This floor plan is intended for illustration only.

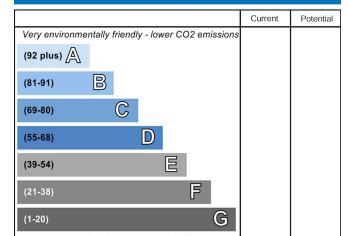
GIRAFFE 360

Energy Efficiency Rating



England & Wales EU Directive 2002/91/EC

Environmental Impact (CO₂) Rating



England & Wales EU Directive 2002/91/EC

These particulars are designed to provide a guideline only and cannot be relied upon as a statement of fact. The description represents the opinion of the author and is not intended to provide false or misleading information. Any prospective purchaser should make further checks on its accuracy. All measurements are approximate and floorplans are for representation only.



Eden Harper
64 Battersea Park Road, London, SW11 4JP
0207 720 1116
info@edenharper.com
www.edenharper.com